

slidelist - sampling of personal work



Mycelium Running

2022. Current Work in Progress. Series of Terrarium-like, Organic-shaped Pods that will house "Old Growth" Temperate forest floor including various types of Mycelium. Controllable via sensors that will read both conditions and measure or amplify the biological and electrical exchanges between the mycelium and the other Flora within the space. As they share and speak. Looking for exchange and interaction. The results will be feed into a neural network providing visual details that will control my next set of drawings.



Pod: Wire, Resin and Resin Cloth 57" L x 20" W x 18"H. . Inside Pod: Platinum-Iridium Needles, Sensors, Equipment, Substrate, Plants, Mosses, Lichens, Invertebrates, Mycelium,



Standing Bear

2016-18. Video-Interactive Drawing/Installation. Color Lights, Wire Drawing, Arduino Sensors, Sound. Proximity. As you move around Bears, the sounds and colors move with you.



Story-Telling - Alaska experience. Wire Bears in Middle act as sensors. Each Wire Bear 46"W x 98" H.

Standing Bears Details - Wire Drawing



Minding Bear

2018. Interactive Video Drawing. EEG (Mind Waves) Input Sensors. As you notice individual bears with the installation, the mind sensors read your reaction and the Bears grow, get angry, stand, or shrink. Discussion of the "thickening" of experience. Size: variable

120" H x 240"W



Detail of an EEG Sensor



Banquet

2014. Mixed-Media Drawing. Ink on Mylar, Prism Screens. Large scale drawing of banquet that continuously shifts based on position, perspective. Low-tech interactivity. Varying sizes, approx. 120" H x 240"W

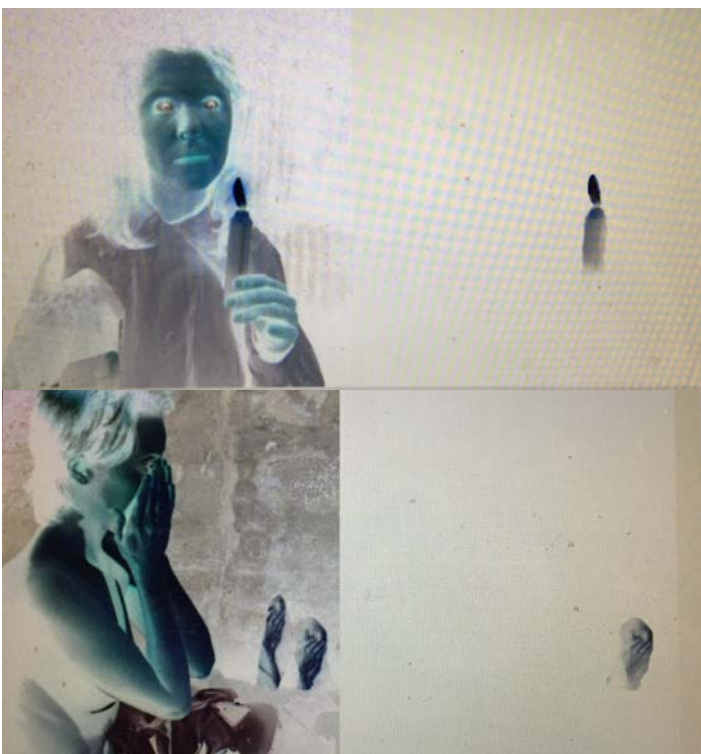


Details of Drawing below Prism screens



Two Friends with Flowers

2008-2021. Drawing. Continuation of Portrait Series. Charcoal on paper. Each portrait 38" W x 50" L

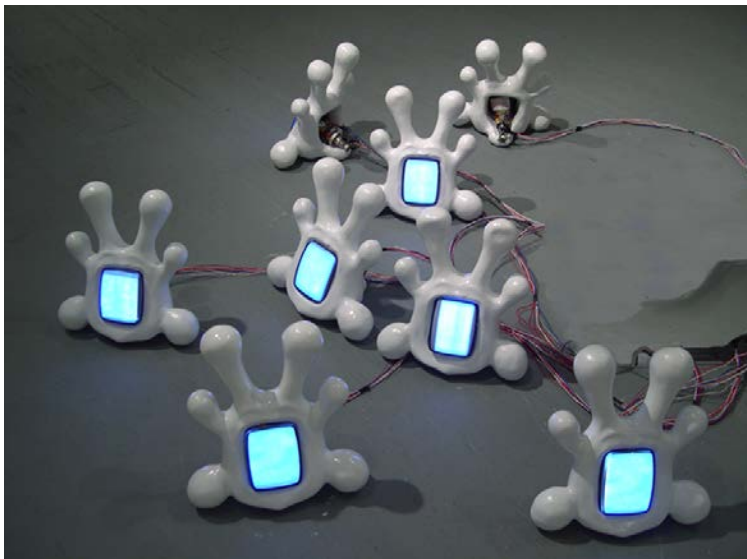
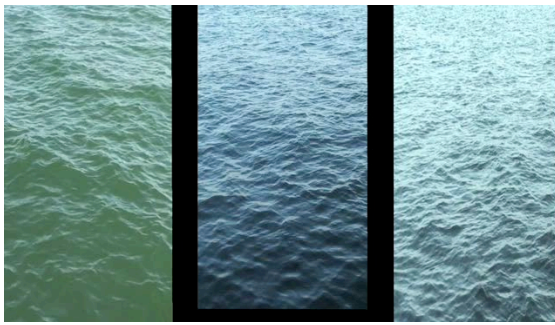


Of Underneath

2019. Video. Re-Imagining Jane Arden's 1972 film "The Other Side of Underneath". Editing fades, transitions, stills and cuts, as well as using the perceptual phenomena of "After Image" to see what we dont speak. Varying sizes.



Clips from Original.



Good News From The Finish

2013. Mixed Media Installation. Video Projection. , Drawing, Sound. Plastic, Mylar. Meditation on movement, color and depth. Three screens, total 222" W x 96"H

Video installation at San Diego International Airport.

Bark

2013. Drawing as Animation, Wood Chips. Drawing of Spatial Verbs. Working layers through a sense of movement as perception, creating space and meaning.

Grate (Passive/Aggressive)

2012. Layered Interactive Video/Sound Projection. Video, Metal Grate, Sound, Sensors. Video Images argue with each other based on viewers position. Varying size.

Grate Detail

How To Win A War

2008-11 Video Argument. Installation. 2012. Interactive Video/Sound Projection. Video, Metal Grate, Sound, Sensors. Video Images argue with each other based on viewers position. Varying size. Plaster, TV tube, video feed, each: 15"W x 15"L x 8"D. Bunny shapes are aligned with screens facing each other in a row. 16 bunnies, 8 arguments

HTWW Detail Imagery shown through screens

curtis bracher



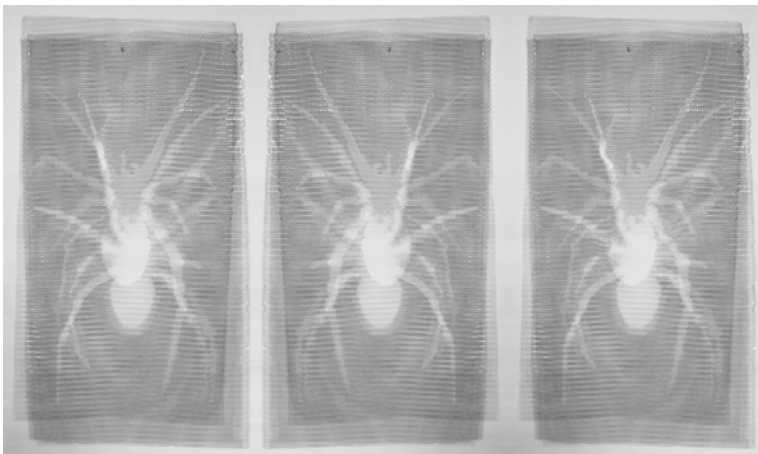
Strike

2009-10 Video Drawing/Installation
Projection video feed. Image video Middle video strikes only. Violence in continuous Image Flow.

Pins each 15"H x 4"W

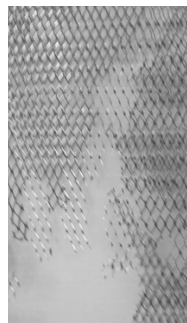


Strike- Detail



Crawl

2013 Drawing. Cut Wire Mesh. Negative Movement.
Movement Perception as Interactive. 3 Panel. Each Panel 28"W x 48"L



Crawl - Detail



Four Wisdoms

2010 Drawing. Charcoal on Paper

32" W x 78"L

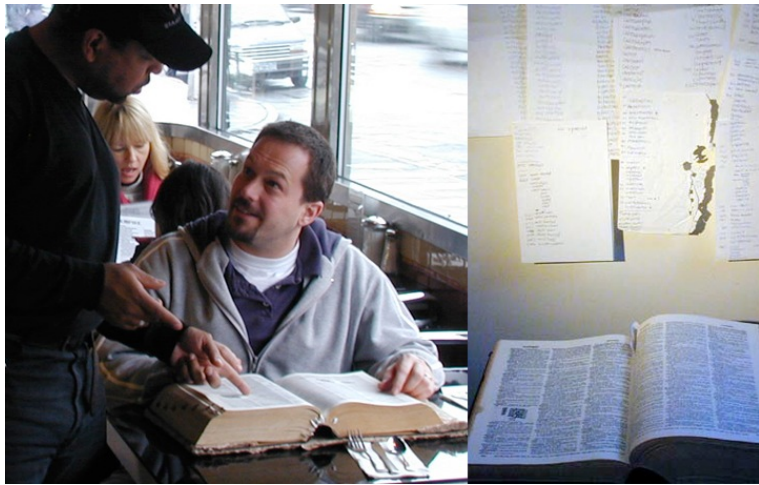


Four More Wisdoms With Sparkle

2011 Mixed-Media Drawing. Light, Ink, Pencil, Charcoal, Glitter on Board.

32" W x 78"L

curtis bracher



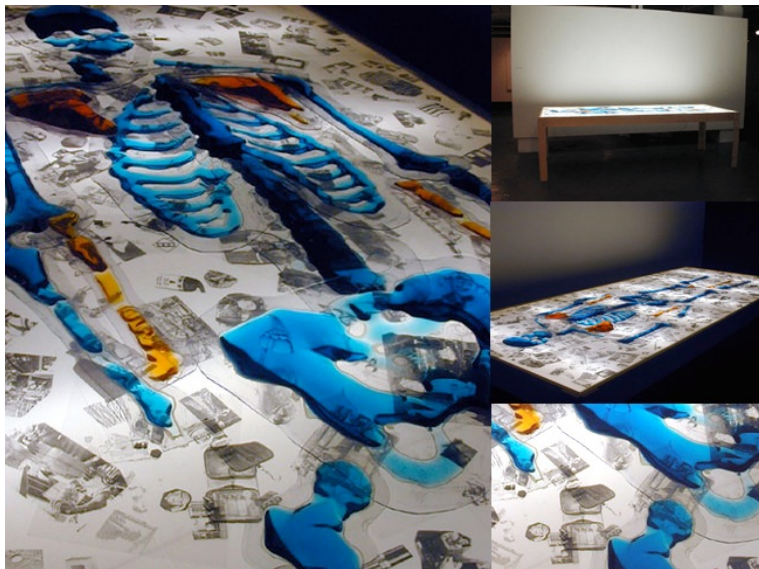
Dictionary

2002 ArtActivity/Performance.
Webster's Unabridged Dictionary, pencil, paper. Read through the entire dictionary looking for words containing "art".
Art in Language. Read or Performed in public places so as to engage discussion of "what is art".



Self-Portrait - Kitchen. Nov 11, 3:32 PM

2005 Animation. Drawing Processes.
Picture of everything in my kitchen at that time. One object follows another. Accumulation as meaning.



Shampoo Bones (Bone Series)

2004. Figure Drawing. Sensory Interactive. Bone series.
Aiming for an interactive approach to the experience of the human form. Table was arranged to allow touching, arranging of bones and bone patterns. Touch, smell and sight. Plastic bones were filled with colored and scented shampoo.

Light table: 36"H x 108"L x 48"W.

Side of slide shows details

curtis bracher



Fossil (Bone Series)

2003 Mixed-Media Painting. Acrylic, wall patch, pencil, paper, dirt.

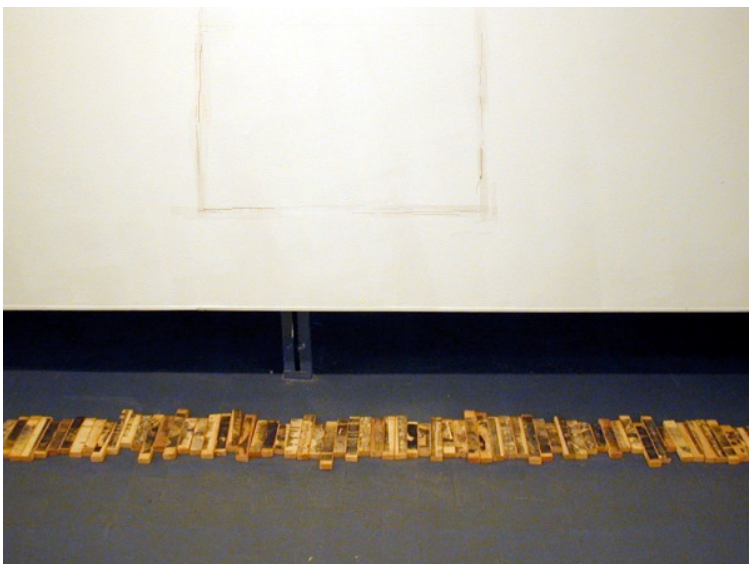
4 Panels - 192"W x 96"L



Subway (Bone Series)

2003 Mixed-Media Painting. Subterranean Sounds - Subway Trains

Acrylic, wall patch, pencil, Speakers
92"W x 96"L



Square

2002 Mixed-Media Drawing. Pencil, wood, image transfer. Wall drawing: 40"x40", each wood segment approx. 8"L x 1.5"W

Image has dropped from surface.

Detail of Toner Transfer on Wood.